

# HD-SDI DVR (1080P Grade)

## Full HD Real-Time HD-SDI DVR with Universal Hybrid Input (8/16Ch)

- ezP2P™ Cloud Service without any complicated network setting
- ezLink™ for Instant Live Monitoring with Mac Address Input
- 3 x Typical **PUSH Functions**
  - PUSH Video Call to iPhone/iPad & Android Phone
  - PUSH Notice for Auto F/W Upgrade
  - PUSH Network Connection under Sensor Event
- **Universal Hybrid DVR**(HH-5108/5116DX)
  - Automatic Perception of CIF/D1/960H/HD-SDI(720P/1080P)
- **POS Function** up to 4 sets of POS Devices
- **Startup Wizard** for Easy Configuration
- Remote Monitoring by Remote S/W(CMS) & Smart Phone
- **Talk-Back Function** for 2-way communication with Smart Phone



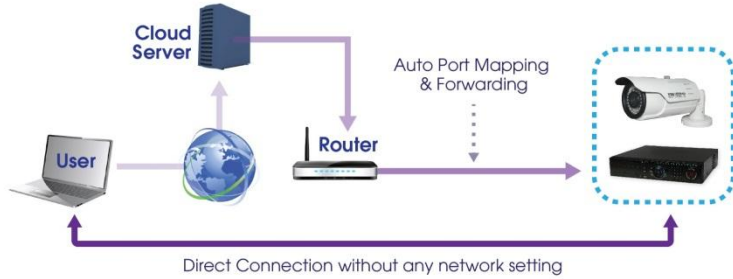
[HE-5104/5108/5116DX]

MODEL		HH-5104CX (4 Ch)	HH-5104DX (4 Ch)	HH-5108DX (8 Ch)	HH-5116DX (16 Ch)
Compression Algorithm		Video : H.264, Audio : ADPCM			
HDD Bay		2 x SATA HDD & 1 x DVD		4 x SATA HDD & 1 x DVD	
Operating System		Embedded Linux			
Video	Input	4 Ch		8 Ch	16 Ch
	Format	HD-SDI(720P/1080P)		CIF/D1/960H/HD-SDI(720P/1080P)	
	Loop-Out	Not Available			
Video Mode		Digital			
Live Display (NTSC/ PAL)		120/100 fps		240/200 fps	480/400 fps
Screen Modes for Live Display		1 & 4		1, 4, 6, 8, & 9	1, 4, 6, 8, 9, 13 & 16
Video-Out	Monitor	2 x Main Monitors (HDMI & VGA)			
	Resolution	HDMI: 800x600, 1024x768, 1280x1024, 1920x1080 (Selectable)			
Recording Speed (NTSC/PAL)	352x240/288(CIF)	-	-	240/200 fps	480/400 fps
	720x240/288(2CIF)	-	-	240/200 fps	480/400 fps
	720x480/576(D1)	-	-	240/200 fps	480/400 fps
	960x480/576(960H)	-	-	240/200 fps	480/400 fps
	1280x720(720P)	120 fps	120 fps	240 fps	480 fps
Recording Resolution	1920x1080(1080P)	120 fps	120 fps	240 fps	480 fps
	Analog	-			
	Digital	1280 x 720, 1920 x 1080			
Recording Modes		Continuous, Scheduled, Sensor-Activated & Motion Detection Recording Pre & Post Alarm Recording, Emergency Recording, Quick Backup			
Playback & Search	Speed	x1, x2, x4, x8, x16, x32			
	Ch & Resolution	1, 4, 9 & 16 Ch at 1080P			
	Function	Intelli-Search by Time Bar, Calendar (Date & Time) and Event Search			
Audio Input / Output		4 Ch / 1 Ch		8 Ch / 1 Ch	16 Ch / 1 Ch
Alarm Input / Relay Output		4 Ch / 1 Ch		8 Ch / 4 Ch	16 Ch / 4 Ch
P/T/Z Control (RS-485)		Virtual Joy-Stick Control on screen by Mouse Pan/Tilt/Zoom/Focus/Iris by Keyboard Gigabit Ethernet (RJ45) Fixed IP, DHCP & DDNS			
LAN					
Network Function		1) Dual-Stream (Local Recording & Network Transmission) 2) Network Bandwidth Control (25 Kbps ~ 1000 Mbps) 3) Live Monitoring, Remote Playback and File Backup (Triplex-on-Remote) 4) Time Synchronization by NTP Server ("pool.ntp.org") 5) Remote & E-Mail Notification, Remote System Reboot by IE, Remote PTZ Control 6) P2P Cloud Service (Auto Port forwarding)			
Remote Management	Software	CMS & MMS (SmartViewerPro)			
	Web (IE)	Live Monitoring, Playback & System Configuration			
Backup Device	Internal	DVD Burner (Option)			
	External	Local Backup by USB ODD, Network Backup by CMS, File Upload to FTP Server			
System Recovery after Power Failure		Auto-Reboot and Journaling File System			
Advanced Functions		1) Firmware Upgrade by USB & CMS over Network 2) Automatic Upgrade of DVR F/W by PUSH Notice 3) Import & Export of Setting Value, Water-Mark, AVI File Backup 4) Quick Setup to designate Recording Period 5) HDD SMART Info (Model, Capacity, Bad Sector, Temperature, Used Period) 6) Warning Alarm for System Over-Temperature 7) Help Message for easy setup & Multi-Language support 8) Digital Zoom for both Live & VOD mode			
POS		Text-in Based (RS232, USB to Serial support, TCP/IP Network) Display POS Data on Live & Playback			
e-SATA		Local Storage Extension through e-SATA Port (Default on Board)			
System Operation		Front Button, IR Remote Controller, USB Mouse, Keyboard (Option)			
Power		12V x 5A D/C		12V x 7A D/C	
Operating Temperature and Humidity		5~40 °C / 20~90% RH			
Dimension (WxDxH)		360 x 380 x 66 (mm)		420 x 428 x 88 (mm)	
Certification		CE & FCC & KCC & WEEE, RoHS			

(\*) Specification is subject to change without prior notice.

## ezP2P™ Cloud Service (www.ezp2p.com)

ezP2P™ Cloud Service is a cloud-based video management system without any complicated network setting. Just login to ezP2P™ Cloud Server (www.ezp2p.com) with your own account and enjoy thumbnail preview and instant live monitoring.



[Main Page]



[Preview]

## ezLink™ with Mac Address

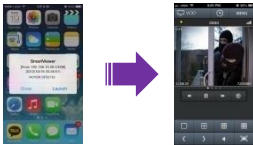
The easiest way to connect to the DVR just by Mac Address.



## Typical PUSH Function

3 PUSH Functions below provides you with efficient monitoring and control of your DVR. It allows you to be free from constant attention to the event that may or may not happen.

**PUSH Video Call**  
to iPhone & Android Phone



**PUSH Notice**  
for Easy F/W Upgrade



**PUSH Network**  
Connection under Sensor Event



## Startup Wizard

Startup Wizard will guide you through the whole process of system startup. You can setup major DVR Configuration by just following the steps which Wizard guides and also can reconfigure these setting at any time by accessing to main menu.



[Language]



[Date/Time]



[Record]



[HDD]



[Network]

## Integrated Network Solution

Guarantee unlimited scalability and seamless integration of all STL products such as DVR, NVR & IP Camera over unique network.



[CMS]



[SmartViewerPro]